

Volvo Construction Equipment
Building Tomorrow



EC60E

Volvo Excavators 5.5-6.8 t / 12,110-14,990 lb 59 hp





WELCOME TO OUR WORLD

Welcome to a world of industry leading machinery. A world where imagination, hard work and technological innovation will lead the way towards developing a future which is cleaner, smarter, and more connected. A world supported by the enduring values of the Volvo Group. A world of stability, sustainability and innovation. A world which we put our customers at the heart of.

Small machines, big results

With decades of experience in the design and manufacture of compact excavators and wheel loaders, our range of compact machinery is designed with customer success in mind. Built from the same DNA as large Volvo machinery, our compact range sets the standard for efficiency performance and uptime – complemented by an extensive range of Volvo attachments for maximum versatility.

Building on our proud history, the Volvo Concept Lab continues to create cutting-edge ideas and innovative concepts – such as our award-winning electric compact excavator – to ensure we offer our customers machines which deliver big results long into the future.



Solutions for you

Our industry leading machines are just the start of your relationship with Volvo. As your partner, we have developed an extensive range of additional solutions to help you improve uptime, boost productivity and reduce costs.

Designed for your business

Structured across nine blocks, our portfolio of products and services are designed to complement your machine's performance and boost your profitability. Simply put, we offer some of the best guarantees, warranties and technological solutions in the industry today.

There when you need us

Whether you're buying new or used, our global network of dealers and technicians offer around-the-clock support, including machine monitoring and world-class parts availability. It's the basis of everything offered by Volvo Services, so you can be confident we've got you covered right from the start.



Fuel Efficiency Services



Productivity Services



Safety Services



Financial Services



Uptime Services



Rental Services



Volvo Attachments



Genuine Volvo Parts



New Life Services

BUILDING TOMORROW

More space, more comfort, more work

The new EC60E features a larger cab design for a comfortable and more productive operator environment. Improved ergonomics and a modern LCD display give you perfect control in all operations. Plenty of storage has been added for personal belongings.

Operator convenience

Increased storage space is available for operator comfort and convenience. A phone tray, two power sockets, cup holder and three other large storage areas makes the Volvo cab a more convenient working environment.



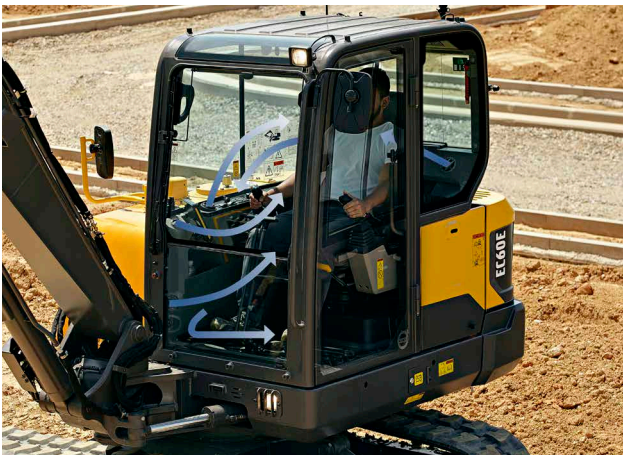
Operator visibility

All-round visibility is improved by thinner pillars, larger glazed area and enlarged wiper blade. The rear view camera secures a better view for perfect and safe control through the 7" color LCD display. This ensures there are no blind spots even in the most confined working areas.



Work in comfort

The comfortable and adjustable seat makes it easier for the operator to work hard all day and feel less tired by the end of it. The cab's air conditioning is 10% more efficient and in automatic mode, the temperature remains at a set level. Six adjustable vents allow for optimal airflow in the cab.



Ease of control

Control your machine with minimal effort in order to get more done in less time. The keypad groups all controls on the right hand side and the 7" color LCD screen displays all machine information for access to functions through its easy to use menus. Through the hot keys, the operator can directly access pre-set functions for added convenience. The new proportional joystick provides better grip, fits your thumb perfectly and increases ease of control.





LARGER CAB

10% more space results in comfortable and relaxed operation, increasing production and reducing fatigue. The new cab design creates more space behind the seat, allowing the operator to move more freely within the space. The new generation Volvo Cab features more in cab room, increased glazed area and reduced noise levels.



BOOSTED PERFORMANCE

Do more in less time with increased combined digging efforts, a 10% improvement in traction, swing force and lifting capacity. The EC60E has been designed to tackle the most challenging job sites and contracts using the powerful Tier 4 final engine and adjustable hydraulic flow.

Power for performance

Climb quicker, swing smoother, dig harder and load faster with the EC60E. Improved traction, swing force and lifting capacity gets you results, fast. This versatile and powerful machine can be tailored for any job and is suitable for a wide range of applications.

Powerful Volvo Tier 4 final engine

Give your job site a boost and achieve fast results. Increased power to 59.4 hp (44.3 kW) and improved cooling ensure optimized performance in any climate. For the ultimate combination of power and performance, the engine helps to push through challenging conditions.



Smooth operation

Smooth combined operation means you can make very accurate and precise movements. With responsive controls the machine does exactly what the operator intends for less fatigue and fluent movement.



Versatility

Perform on any job site, whether you're working in a confined space or major construction area. The machine's compact design, long arm, optional fixed boom and offset boom, longer dozer blade, auxiliary hydraulic and thumb pipings makes the machine suitable for a wide range of jobs and applications.



Operator performance

The operator can set the machine to their own style and to suit the job at hand for easier control and increased performance. The auxiliary hydraulic flows, electric dozer blade and boom offset speed can be adjusted by the operator and tailored to three different work response modes – 'Active', 'Normal' or 'Soft'.



Profit in your business

The EC60E is designed and built to increase your profitability and keep you working for longer. To reduce your running costs it features excellent service access, convenient maintenance points and Volvo's auto engine shutdown feature. With better fuel efficiency this durable and reliable machine secures your costs and increases your uptime.

Low fuel consumption

The new Volvo engine and improved hydraulics together offer superior fuel efficiency. The standard auto idle feature helps to reduce your fuel consumption even further and increase your profits.



Auto engine shutdown

A unique offering from Volvo, the engine stops automatically after a preselected time, lowering fuel costs and noise. A stopped hour meter reduces maintenance costs and increases the resale value of the machine.



MATRIS and VCADS Pro

By working with your dealer and using Volvo MATRIS software you can analyse operator behaviour to improve efficiency, boost productivity and reduce your fuel and maintenance costs. Volvo also offers the VCADS Pro diagnostic system, making it easy to control your machine.



Durability and reliability

The EC60E is designed with the same high quality as all Volvo machines so you can be assured it's durable and reliable on your job site. You can depend on your machine to perform and work hard for peace of mind.





SERVICEABILITY

Keep your machine up and running with a number of features combined to increase machine availability and reduce downtime. Ground level service access, including new main control valve location, convenient greasing points and an easy to clean cooling unit all reduce service time and maintenance costs. Check service intervals easily through the in-cab screen, which shows reminders when maintenance is needed.



ATTACHMENTS VERSATILITY

The machine's attachment can be easily changed to save time and costs. Its design, hydraulics, piping and in-cab switches combined with the Volvo attachments range allows the EC60E to take on a variety of tasks. Volvo attachments work in harmony with the machine to deliver maximum productivity.

One machine, many applications

Volvo offers a wide range of durable attachments that are suitable for any job site, including utilities, building, agriculture, landscaping and forestry. Volvo attachments are an integrated part of the excavator for which they're intended –delivering maximum productivity and versatility.

Quick coupler

Both the mechanical and the hydraulic quick couplers allow attachments to be changed quickly and efficiently. Making it easier on site, the quick coupler picks different Volvo buckets and is the perfect match for the breakers and thumb.



Breaker

Volvo's durable hydraulic breakers have been designed for ultimate compatibility with Volvo excavators. The wide range of breaker tools (or bits) has been built to break all kinds of materials and combines excellent performance with low noise and vibration levels.



Buckets

A complete range of buckets from general purpose reinforced buckets to ditching buckets, allow the machine to work on many job sites for a wide range of applications. The durable buckets can work in loose gravel, crushed rock, dirt and soil.



Thumb

Designed to work with both Volvo direct fit buckets and quick coupler, the Volvo thumb makes many tasks possible, including piling, placing, loading, lifting and carrying.



A compact machine with big potential

BOOSTED PERFORMANCE

Do more in less time with increased combined digging efforts, a 10% improvement in traction, swing force and lifting capacity.

Smooth operation

Smooth combined operation means you can make very accurate and precise movements.

MATRIS and VCADS Pro

Volvo MATRIS analyses operator behaviour, improving efficiency and productivity. VCADS Pro helps to control your machine.

ATTACHMENTS VERSATILITY

The Volvo attachments range allows the machine to take on a variety of tasks for a wide range of jobs and applications.

Versatility

Perform on any job site, whether you're working in a confined space or major construction area

Auto engine shutdown

The auto engine shutdown provides lower fuel costs, less noise, much lower maintenance costs and a greater resale value.

ECO mode

Volvo's unique ECO mode improves fuel efficiency without any loss of performance in most operating conditions.



LARGER CAB

More space results in comfortable and relaxed operation, increasing production and reducing fatigue.

SERVICEABILITY

Ground level service access, new main control valve location, convenient greasing points and easy to clean cooling unit reduce service time.

Ease of control

The keypad groups all controls on the right hand side and the LCD screen displays all machine information for access to functions.

Operator convenience

Increased storage space in the cab provides for operator comfort and convenience.

Powerful Volvo Tier 4 final engine

For the ultimate combination of power and performance, the powerful engine pushes through challenging conditions.

CUSTOMER SUPPORT AGREEMENTS

Customer Support Agreements offer preventive maintenance, total repairs and a number of uptime services.



Adding value to your business

Being a Volvo customer means having a complete set of services at your fingertips. Volvo can offer you a long-term partnership, protect your revenue and provide a full range of customer solutions using high quality parts, delivered by passionate people. Volvo is committed to increasing the positive return on your investment and maximising uptime.

Complete Solutions

Volvo has the right solution for you. So why not let us provide all your needs throughout the whole life cycle of your machine? By

listening to your requirements, we can reduce your total cost of ownership and increase your revenue.



Genuine Volvo Parts

Our attention to detail is what makes us stand out. This proven concept acts as a solid investment in your machine's future. Parts are extensively tested and approved because every part is vital for uptime and performance. Only by using Genuine Volvo Parts, can you be sure that your machine retains the renowned Volvo quality.

Service Network

In order to respond to your needs faster, a Volvo expert is on their way to your job site from one of our Volvo facilities. With our extensive infrastructure of technicians, workshops and dealers, Volvo has a comprehensive network to fully support you using local knowledge and global experience.





CUSTOMER SUPPORT AGREEMENTS

The range of Customer Support Agreements offer preventive maintenance, total repairs and a number of uptime services. Volvo uses the latest technology to monitor machine operation and status, giving you advice to increase your profitability. By having a Customer Support Agreement you are in control of your service costs.

Volvo EC60E in detail

Engine

The new engine which provide excellent performance is equipped with a four-cylinder, vertical, electronic controlled high pressure fuel injectors, in-line turbo charger and water cooled diesel engine type. This engine fully meets the demands of the latest Tier 4 final emissions regulations.

Model	Volvo	D2.6H
Max. power at	r/min (r/s)	2,200 (36.7)
Net (ISO 9249/SAEJ1349)	kW (hp)	42.7 (57.3)
Gross (SAE J1995)	kW (hp)	44.3 (59.4)
Max. torque	Nm (ft lbf)	221.6 (163)
at engine speed	r/min	1,500
No. of cylinders		4
Displacement	l (in ³)	2.61 (159)
Bore	mm (in)	87 (3.42)
Stroke	mm (in)	110 (4.33)

Electrical system

Voltage	V	12
Batteries	V	1 x 12
Battery capacity	Ah	100
Alternator	V/Ah	12/90
Starter motor output	V - kW	12 - 2.5

Hydraulic system

Open-center, negative hydraulic system providing accurate controllability

Main pump: Variable-displacement pump

Maximum flow	l/min (gal/min)	2 x 60.5 (2 x 16)
--------------	-----------------	-------------------

Swing pump: Gear pump

Maximum flow	l/min (gal/min)	1 x 35.2 (1 x 9.3)
--------------	-----------------	--------------------

Relief valve setting pressure

Implement	MPa (psi)	22.6 (3,278)
Travel circuit	MPa (psi)	24.5 (3,560)
Swing circuit	MPa (psi)	19.6 (2,843)
Pilot circuit	MPa (psi)	3.2 (464)
Breaker & shear X1 maximum flow	l/min (gal/min)	60.5 (15.9)
Breaker & shear X1 maximum pressure	MPa (psi)	22.5 (3,263)
Slope & rotator X3 maximum flow	l/min (gal/min)	20.2 (5.3)
Slope & rotator X3 maximum pressure	MPa (psi)	14.7 (2,132)

Travel System

Each track is powered by an automatic two-speed shift travel motor. The track brakes are multi-disc, spring-applied and hydraulic released. The travel motor, brake and planetary gears are well protected within the track frame.

Travel speed low	km/h (mi/h)	2.4 (1.5)
Travel speed high	km/h (mi/h)	4.4 (2.7)
Max. drawbar pull	kN (lbf)	52.8 (11,870)
Gradeability	°	35

Service Refill

Fuel tank	l (gal)	105 (27.7)
Hydraulic system, total	l (gal)	120 (31.7)
Hydraulic tank	l (gal)	76 (20.1)
Engine oil	l (gal)	11 (2.9)
Engine coolant	l (gal)	10 (2.6)
Travel reduction unit	l (gal)	2 x 0.8 (2 x 0.2)

Sound Level

Sound pressure level in cab according to ISO 6396

L _{PA} (standard)	dB	78
----------------------------	----	----

External sound level according to ISO 6395 and EU Noise Directive 2000/14/EC

L _{WA} (standard)	dB	97
----------------------------	----	----

Swing system

No need for gear oil replacement

The lubricating system uses hydraulic operation oil for the reduction gear, eliminating the need for gear oil replacement.

Built-in parking brake

Parking brake can be built into the hydraulic motor, enabling safer parking on an incline.

Shockless function

Shockless relief is standard equipment to enable smooth traversing.

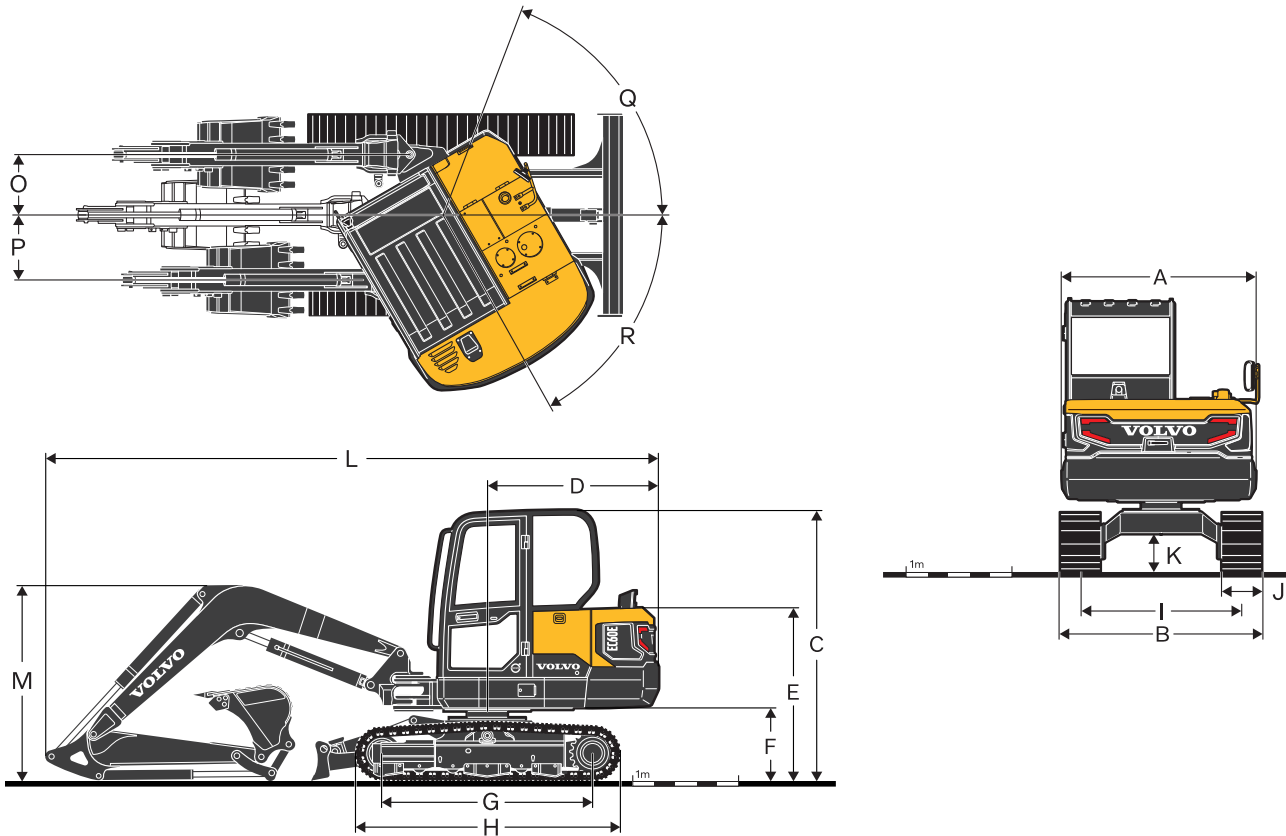
Max. swing speed	r/min	9.2
Max. swing torque	kNm (ft lbf)	12.3 (9,072)

Undercarriage

The undercarriage has a robust X-shaped frame.

Track shoes		2 x 39
Link pitch	mm (in)	135 (5.31)
Shoe width - steel	mm (in)	380 / 500 (15 / 19.7)
Shoe width - rubber	mm (in)	400 (15.7)
Bottom rollers		2 x 5
Top rollers		2 x 1

Specifications

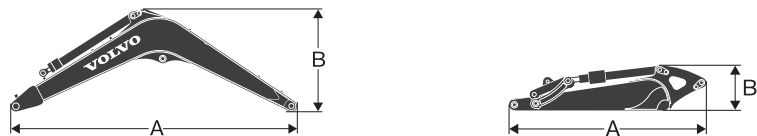


DIMENSIONS		EC60E					
Boom		m	ft in	3.0	9'10"	3.0	9'10"
Arm		m	ft in	1.6	5'3"	1.9	6'3"
A	Overall width of upper structure	mm	ft in	1 845	6'1"	1 845	6'1"
B	Overall width	mm	ft in	1 920	6'4"	1 920	6'4"
C	Overall height of cab	mm	ft in	2 584	8'6"	2 584	8'6"
D	Tail swing radius	mm	ft in	1 650	5'5"	1 650	5'5"
E	Overall height of engine hood	mm	ft in	1 630	5'4"	1 630	5'4"
F	Counterweight clearance *	mm	ft in	671	2'2"	671	2'2"
G	Tumbler length	mm	ft in	1 990	6'6"	1 990	6'6"
H	Track length	mm	ft in	2 500	8'2"	2 500	8'2"
I	Track gauge	mm	ft in	1 520	5'0"	1 520	5'0"
J	Shoe width	mm	ft in	380	1'3"	380	1'3"
K	Min. ground clearance *	mm	ft in	350	1'2"	350	1'2"
L	Overall length	mm	ft in	5 800	19'0"	5 865	19'3"
M	Overall height of boom	mm	ft in	1 854	6'1"	1 978	6'6"
O	Boom swing distance	mm	ft in	684	2'3"	684	2'3"
P	Boom swing distance	mm	ft in	755	2'6"	755	2'6"
Q	Boom swing angle	°		80		80	
R	Boom swing angle	°		50		50	

* Without shoe grouser

** Based on Steel track

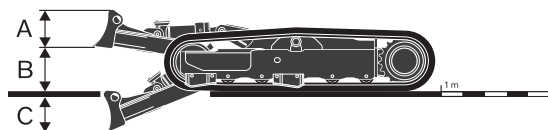
Specifications



DIMENSIONS		Unit		Boom		Arm			
		m	ft in	3.0	9'10"	1.6	5'3"	1.9	6'3"
A	Length	mm	ft in	3 110	10'2"	2 102	6'11"	2 402	7'11"
B	Height	mm	ft in	1 192	3'11"	488	1'7"	497	1'8"
	Width	mm	ft in	336	1'1"	300	1'0"	300	1'0"
	Weight	kg	lb	378	830	168	370	181	400

Boom * Includes cylinder, piping and pin, excludes boom cyl. Pin

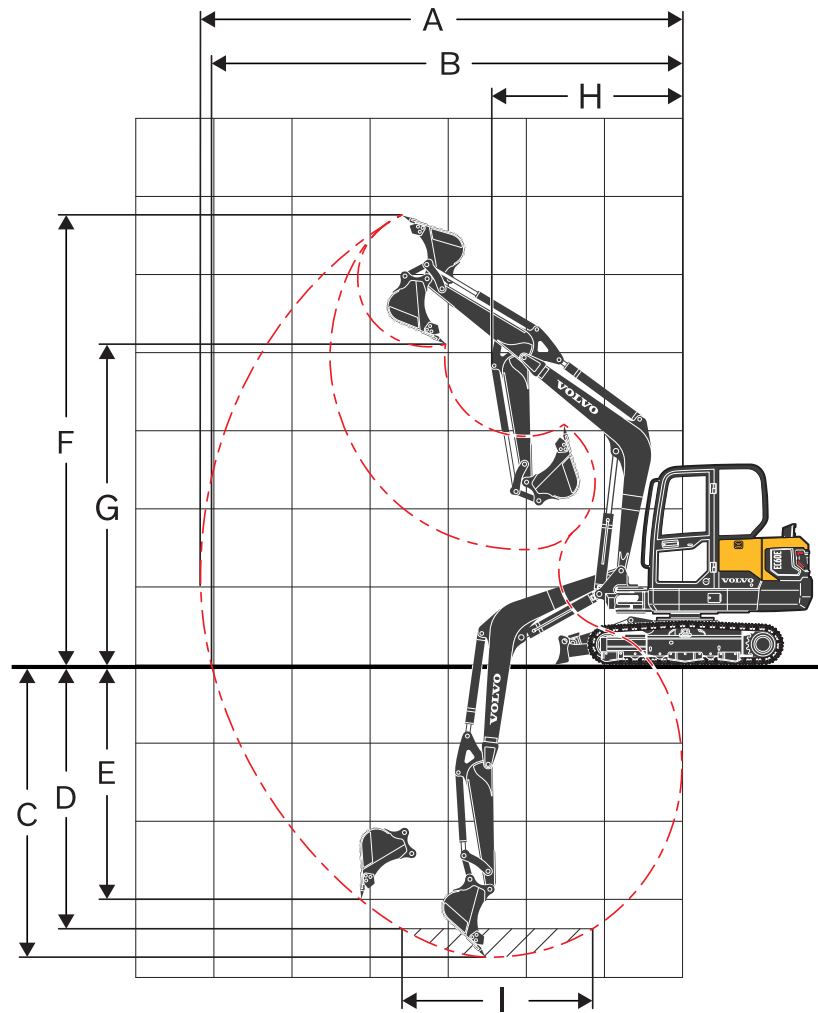
Arm * Includes cylinder, linkage and pin



DIMENSIONS		Unit		Dozer blade				
				Standard dozer		Zero-offset (Longer) dozer		Angle dozer
A	Height	mm	ft in	350	1'2"	350	1'2"	397
	Width	mm	ft in	1 920	6'4"	1 920	6'4"	1 920
B	Lifting height	mm	ft in	351	1'2"	405	1'4"	399
C	Digging depth	mm	ft in	446	1'6"	635	2'1"	682
	Angle (Right)		°	-	-	-	-	25
	Angle (Left)		°	-	-	-	-	25

MACHINE WEIGHTS AND GROUND PRESSURE

	Shoe width		Operating weight		Ground pressure	
	mm	in	kg	lb	kPa	psi
Boom 3 m / 9'10", Arm 1.6 m / 5'3", Bucket 129 kg (142 l) / 280 lb, Counterweight 440 kg / 970 lb						
Steel track	380	15"	5 877	12,960	34.9	5
Steel track	500	20"	5 979	13,180	27	4
Rubber track	400	16"	5 730	12,630	32.3	5
Rubber pad	400	16"	6 049	13,340	33.8	5
Boom 3 m / 9'10", Arm 1.9 m / 6'3", Bucket 129 kg (142 l) / 280 lb, Counterweight 440 kg / 970 lb						
Steel track	380	15"	5 927	13,070	35.2	5
Steel track	500	20"	6 029	13,290	27.2	4
Rubber track	400	16"	5 780	12,740	32.6	5
Rubber pad	400	16"	6 099	13,450	34.1	5



WORKING RANGES

Description		Unit					
Boom		m	ft in	3.0	9'10"	3.0	9'10"
Arm		m	ft in	1.6	5'3"	1.9	6'3"
A	Max. digging reach	mm	ft in	6 105	20'0"	6 395	21'0"
B	Max. digging reach on ground	mm	ft in	5 970	19'7"	6 260	20'6"
C	Max. digging depth	mm	ft in	3 695	12'1"	3 995	13'1"
D	Max. digging depth (l=2.44m / 8'0" level)	mm	ft in	3 295	10'10"	3 640	11'11"
E	Max. vertical wall digging depth	mm	ft in	2 625	8'7"	2 900	9'6"
F	Max. cutting height	mm	ft in	5 695	18'8"	5 885	19'4"
G	Max. dumping height	mm	ft in	4 150	13'7"	4 340	14'3"
H	Min. front swing radius	mm	ft in	2 465	8'1"	2 470	8'1"

DIGGING FORCES WITH DIRECT FIT BUCKET

Breakout force (bucket)	SAE J1179	kN	lb	37.7	8,470	37.7	8,470
	ISO 6015	kN	lb	43.3	9,720	43.3	9,720
Tearout force (arm)	SAE J1179	kN	lb	28.2	6,340	25	5,630
	ISO 6015	kN	lb	28.8	6,470	25.4	5,710
Rotation angle, bucket		°		196		196	

Specifications

LIFTING CAPACITY EC60E

Lifting capacity at the arm end without bucket.

For lifting capacity including bucket, simply subtract actual weight of the direct fit bucket or the bucket with quick coupler from the following values.

	Lifting hook related to ground level		1.0 m	3.3 ft	2.0 m	6.6 ft	3.0 m	9.9 ft	4.0 m	13.2 ft	5.0 m	16.5 ft	Max. Reach		
			Along UC	Across UC	Along UC	Across UC	Along UC	Across UC	Along UC	Across UC	Along UC	Across UC	Along UC	Across UC	
Boom: 3.0m / 9'10" Arm: 1.6m GP / 5'3" GP Shoe: 400mm / 16" Rubber track CWT: 440 kg / 970lb Dozerblade: Down	4.0 m	kg	-	-	-	-	-	-	*1 450	1 150	-	-	*1 420	1 000	4.3 m
	13.2 ft	lb	-	-	-	-	-	-	*3,210	2,510	-	-	*3,140	2,220	14.1 ft
	3.0 m	kg	-	-	-	-	-	-	*1 510	1 130	-	-	*1 320	800	4.9 m
	9.9 ft	lb	-	-	-	-	-	-	*3,310	2,480	-	-	*2,920	1,770	16.1 ft
	2.0 m	kg	-	-	-	-	*2 320	1 670	*1 730	1 080	*1 470	770	*1 330	710	5.2 m
	6.6 ft	lb	-	-	-	-	*5,070	3,670	*3,790	2,380	*3,230	1,680	*2,920	1,570	17.2 ft
	1.0 m	kg	-	-	-	-	*2 910	1 550	*1 960	1 030	*1 540	750	*1 400	680	5.3 m
	3.3 ft	lb	-	-	-	-	*6,360	3,390	*4,300	2,260	*3,370	1,630	*3,090	1,510	17.4 ft
	0.0 m	kg	-	-	*1 360	*1 360	*3 050	1 490	*2 060	990	*1 520	730	*1 450	700	5.1 m
	0.0 ft	lb	-	-	*3,060	*3,060	*6,670	3,270	*4,520	2,180	*3,330	1,600	*3,200	1,550	16.9 ft
	-1.0 m	kg	*2 430	*2 430	*3 230	2 910	*2 790	1 480	*1 930	980	-	-	*1 440	790	4.7 m
	-3.3 ft	lb	*5,390	*5,390	*7,200	6,340	*6,120	3,250	*4,220	2,160	-	-	*3,180	1,750	15.5 ft
	-2.0 m	kg	-	-	*3 140	2 960	*2 130	1 510	-	-	-	-	*1 340	1 030	4.0 m
	-6.6 ft	lb	-	-	*6,860	6,470	*4,650	3,310	-	-	-	-	*2,960	2,280	12.9 ft
Boom: 3.0m / 9'10" Arm: 1.6m GP / 5'3" GP Shoe: 400mm / 16" Rubber track CWT: 440 kg / 970lb Dozerblade: Up	4.0 m	kg	-	-	-	-	-	-	*1 450	1 070	-	-	1 290	930	4.3 m
	13.2 ft	lb	-	-	-	-	-	-	*3,210	2,340	-	-	2,860	2,070	14.1 ft
	3.0 m	kg	-	-	-	-	-	-	1 460	1 050	-	-	1 030	740	4.9 m
	9.9 ft	lb	-	-	-	-	-	-	3,190	2,310	-	-	2,290	1,640	16.1 ft
	2.0 m	kg	-	-	-	-	2 210	1 550	1 410	1 010	1 000	710	930	660	5.2 m
	6.6 ft	lb	-	-	-	-	4,830	3,390	3,080	2,210	2,190	1,560	2,050	1,460	17.2 ft
	1.0 m	kg	-	-	-	-	2 070	1 430	1 350	950	980	690	890	630	5.3 m
	3.3 ft	lb	-	-	-	-	4,540	3,130	2,960	2,090	2,140	1,510	1,980	1,400	17.4 ft
	0.0 m	kg	-	-	*1 360	*1 360	2 010	1 370	1 310	920	960	670	920	650	5.1 m
	0.0 ft	lb	-	-	*3,060	*3,060	4,400	3,000	2,880	2,010	2,100	1,480	2,040	1,440	16.9 ft
	-1.0 m	kg	*2 430	*2 430	*3 230	2 630	2 000	1 360	1 300	910	-	-	1 040	730	4.7 m
	-3.3 ft	lb	*5,390	*5,390	*7,200	5,740	4,380	2,990	2,860	1,990	-	-	2,300	1,620	15.5 ft
	-2.0 m	kg	-	-	*3 140	2 680	2 030	1 390	-	-	-	-	*1 340	950	4.0 m
	-6.6 ft	lb	-	-	*6,860	5,860	4,450	3,050	-	-	-	-	*2,960	2,110	12.9 ft
Boom: 3.0m / 9'10" Arm: 1.6m GP / 5'3" GP Shoe: 380mm / 15" Steel Track CWT: 440 kg / 970lb Dozerblade: Down	4.0 m	kg	-	-	-	-	-	-	*1 450	1 180	-	-	*1 420	1 020	4.3 m
	13.2 ft	lb	-	-	-	-	-	-	*3,210	2,570	-	-	*3,140	2,280	14.1 ft
	3.0 m	kg	-	-	-	-	-	-	*1 510	1 160	-	-	*1 320	820	4.9 m
	9.9 ft	lb	-	-	-	-	-	-	*3,310	2,540	-	-	*2,920	1,820	16.1 ft
	2.0 m	kg	-	-	-	-	*2 320	1 720	*1 730	1 110	*1 470	790	*1 330	730	5.2 m
	6.6 ft	lb	-	-	-	-	*5,070	3,760	*3,790	2,440	*3,230	1,730	*2,920	1,620	17.2 ft
	1.0 m	kg	-	-	-	-	*2 910	1 590	*1 960	1 060	*1 540	770	*1 400	700	5.3 m
	3.3 ft	lb	-	-	-	-	*6,360	3,490	*4,300	2,320	*3,370	1,680	*3,090	1,560	17.4 ft
	0.0 m	kg	-	-	*1 360	*1 360	*3 050	1 530	*2 060	1 020	*1 520	750	*1 450	720	5.1 m
	0.0 ft	lb	-	-	*3,060	*3,060	*6,670	3,360	*4,520	2,240	*3,330	1,650	*3,200	1,600	16.9 ft
	-1.0 m	kg	*2 430	*2 430	*3 230	2 990	*2 790	1 530	*1 930	1 010	-	-	*1 440	810	4.7 m
	-3.3 ft	lb	*5,390	*5,390	*7,200	6,520	*6,120	3,340	*4,220	2,220	-	-	*3,180	1,800	15.5 ft
	-2.0 m	kg	-	-	*3 140	3 040	*2 130	1 560	-	-	-	-	*1 340	1 060	4.0 m
	-6.6 ft	lb	-	-	*6,860	6,650	*4,650	3,410	-	-	-	-	*2,960	2,350	12.9 ft
Boom: 3.0m / 9'10" Arm: 1.6m GP / 5'3" GP Shoe: 380mm / 15" Steel Track CWT: 440 kg / 970lb Dozerblade: Up	4.0 m	kg	-	-	-	-	-	-	*1 450	1 100	-	-	1 320	950	4.3 m
	13.2 ft	lb	-	-	-	-	-	-	*3,210	2,400	-	-	2,950	2,120	14.1 ft
	3.0 m	kg	-	-	-	-	-	-	1 500	1 080	-	-	1 070	760	4.9 m
	9.9 ft	lb	-	-	-	-	-	-	3,280	2,370	-	-	2,360	1,690	16.1 ft
	2.0 m	kg	-	-	-	-	2 270	1 590	1 450	1 030	1 030	730	960	680	5.2 m
	6.6 ft	lb	-	-	-	-	4,960	3,480	3,180	2,270	2,250	1,610	2,120	1,500	17.2 ft
	1.0 m	kg	-	-	-	-	2 140	1 470	1 390	980	1 010	710	920	650	5.3 m
	3.3 ft	lb	-	-	-	-	4,670	3,210	3,050	2,150	2,210	1,560	2,040	1,440	17.4 ft
	0.0 m	kg	-	-	*1 360	*1 360	2 070	1 410	1 360	950	990	700	950	670	5.1 m
	0.0 ft	lb	-	-	*3,060	*3,060	4,540	3,090	2,970	2,070	2,170	1,530	2,110	1,480	16.9 ft
	-1.0 m	kg	*2 430	*2 430	*3 230	2 700	2 070	1 400	1 340	940	-	-	1 070	750	4.7 m
	-3.3 ft	lb	*5,390	*5,390	*7,200	5,900	4,520	3,070	2,950	2,050	-	-	2,370	1,660	15.5 ft
	-2.0 m	kg	-	-	*3 140	2 760	2 100	1 430	-	-	-	-	*1 340	980	4.0 m
	-6.6 ft	lb	-	-	*6,860	6,020	4,580	3,130	-	-	-	-	*2,960	2,170	12.9 ft
Boom: 3.0m / 9'10" Arm: 1.9m GP / 6'3" GP Shoe: 400mm / 16" Rubber track CWT: 440 kg / 970lb Dozerblade: Down	5.0 m	kg	-	-	-	-	-	-	-	-	-	-	*1 380	1 290	3.7 m
	16.5 ft	lb	-	-	-	-	-	-	-	-	-	-	*3,060	2,890	12.1 ft
	4.0 m	kg	-	-	-	-	-	-	*1 280	1 160	-	-	*1 160	880	4.7 m
	13.2 ft	lb	-	-	-	-	-	-	*2,830	2,540	-	-	*2,560	1,950	15.3 ft
	3.0 m	kg	-	-	-	-	-	-	*1 360	1 140	*1 310	780	*1 090	720	5.2 m
	9.9 ft	lb	-	-	-	-	-	-	*3,000	2,490	*2,900	1,720	*2,400	1,590	17.2 ft
	2.0 m	kg	-	-	-	-	*2 070	1 700	*1 600	1 090	*1 380	760	*1 090	650	5.5 m
	6.6 ft	lb	-	-	-	-	*4,530	3,720	*3,510	2,380	*3,040	1,680	*2,400	1,430	18.1 ft
	1.0 m	kg	-	-	-	-	*2 740	1 560	*1 870	1 030	*1 480	740	*1 140	620	5.6 m
	3.3 ft	lb	-	-	-	-	*5,990	3,410	*4,100	2,250	*3,260	1,620	*2,520	1,370	18.3 ft
	0.0 m	kg	-	-	*1 510	*1 510	*3 020	1 480	*2 030	980	*1 530	720	*1 270	630	5.4 m
	0.0 ft	lb	-	-	*3,370	*3,370	*6,610	3,230	*4,440	2,150	*3,340	1,570	*2,800	1,410	17.8 ft
	-1.0 m	kg	*2 060	*2 060	*2 880	2 840	*2 890	1 450	*1 980	960	*1 380	710	*1 350	700	5.1 m
	-3.3 ft	lb	*4,560	*4,560	*6,410	6,200	*6,320	3,190	*4,330	2,110	*3,000	1,560	*2,970	1,550	16.6 ft
	-2.0 m	kg	*3 400	*3 400	*3 700	2 890	*2 370	1 470	*1 590	980	-	-	*1 300	870	4.4 m
	-6.6 ft	lb	*7,540	*7,540	*8,080	6,320	*5,170	3,230	*3,450	2,140	-	-	*2,860	1,940	14.3 ft
	-3.0 m	kg	-	-	*1 690	*1 690	*1 040	*1 040	-	-	-	-	*970	*970	3.1 m
	-9.9 ft	lb	-	-	*3,610	*3,610	*2,160	*2,160	-	-	-	-	*2,110	*2,110	10.0 ft

Notes: 1. The above loads are in compliance with SAE J1097 and ISO 10567 Hydraulic Excavator Lifting Capacity Standards. 2. Rated loads do not exceed 87% of hydraulic lifting capacity or 75% of tipping load. 3. Rated loads marked with an asterisk (*) are limited by hydraulic capacity rather than tipping load.

LIFTING CAPACITY EC60E

Lifting capacity at the arm end without bucket.

For lifting capacity including bucket, simply subtract actual weight of the direct fit bucket or the bucket with quick coupler from the following values.

	Lifting hook related to ground level	1.0 m, 3.3 ft		2.0 m, 6.6 ft		3.0 m, 9.9 ft		4.0 m, 13.2 ft		5.0 m, 16.5 ft		Max. Reach	
		Along UC	Across UC	Along UC	Across UC	Along UC	Across UC	Along UC	Across UC	Along UC	Across UC	Along UC	Across UC
Boom: 3.0m / 9'10" Arm: 1.9m GP / 6'3" GP Shoe: 400mm / 16" Rubber track CWT: 440 kg / 970lb Dozerblade: Up	5.0 m kg	-	-	-	-	-	-	-	-	-	-	*1 380	1 200
	16.5 ft lb	-	-	-	-	-	-	-	-	-	-	*3,060	2,690
	4.0 m kg	-	-	-	-	-	-	*1 280	1 080	-	-	1 130	810
	13.2 ft lb	-	-	-	-	-	-	*2,830	2,370	-	-	2,520	1,810
	3.0 m kg	-	-	-	-	-	-	*1 360	1 060	1 020	730	940	670
	9.9 ft lb	-	-	-	-	-	-	*3,000	2,320	2,220	1,590	2,070	1,480
	2.0 m kg	-	-	-	-	*2 070	1 570	1 410	1 010	1 000	710	850	600
	6.6 ft lb	-	-	-	-	*4,530	3,440	3,090	2,210	2,180	1,550	1,870	1,320
	1.0 m kg	-	-	-	-	2 080	1 430	1 350	950	970	680	820	570
	3.3 ft lb	-	-	-	-	4,560	3,140	2,960	2,080	2,120	1,500	1,810	1,270
	0.0 m kg	-	-	*1 510	*1 510	2 000	1 360	1 300	910	940	660	840	590
	0.0 ft lb	-	-	*3,370	*3,370	4,370	2,970	2,850	1,980	2,070	1,450	1,860	1,300
	-1.0 m kg	*2 060	*2 060	*2 880	2 560	1 970	1 330	1 280	890	940	660	930	650
	-3.3 ft lb	*4,560	*4,560	*6,410	5,600	4,310	2,920	2,810	1,940	2,060	1,440	2,050	1,430
	-2.0 m kg	*3 400	*3 400	*3 700	2 610	1 990	1 350	1 300	900	-	-	1 160	810
	-6.6 ft lb	*7,540	*7,540	*8,080	5,710	4,360	2,960	2,840	1,970	-	-	2,560	1,790
	-3.0 m kg	-	-	*1 690	*1 690	*1 040	*1 040	-	-	-	-	*970	*970
	-9.9 ft lb	-	-	*3,610	*3,610	*2,160	*2,160	-	-	-	-	*2,110	*2,110
Boom: 3.0m / 9'10" Arm: 1.9m GP / 6'3" GP Shoe: 380mm / 15" Steel track CWT: 440 kg / 970lb Dozerblade: Down	5.0 m kg	-	-	-	-	-	-	-	-	-	-	*1 380	1 230
	16.5 ft lb	-	-	-	-	-	-	-	-	-	-	*3,060	2,690
	4.0 m kg	-	-	-	-	-	-	*1 280	1 190	-	-	*1 160	900
	13.2 ft lb	-	-	-	-	-	-	*2,830	2,600	-	-	*2,560	2,000
	3.0 m kg	-	-	-	-	-	-	*1 360	1 170	*1 310	800	*1 090	740
	9.9 ft lb	-	-	-	-	-	-	*3,000	2,560	*2,900	1,760	*2,400	1,640
	2.0 m kg	-	-	-	-	*2 070	1 740	*1 600	1 110	*1 380	790	*1 090	660
	6.6 ft lb	-	-	-	-	*4,530	3,810	*3,510	2,440	*3,040	1,720	*2,400	1,470
	1.0 m kg	-	-	-	-	*2 740	1 600	*1 870	1 050	*1 480	760	*1 140	640
	3.3 ft lb	-	-	-	-	*5,990	3,500	*4,100	2,310	*3,260	1,660	*2,510	1,410
	0.0 m kg	-	-	*1 510	*1 510	*3 020	1 520	*2 030	1 010	*1 530	740	*1 270	650
	0.0 ft lb	-	-	*3,370	*3,370	*6,610	3,320	*4,440	2,210	*3,340	1,620	*2,800	1,450
	-1.0 m kg	*2 060	*2 060	*2 880	*2 880	*2 890	1 500	*1 980	990	*1 380	730	*1 350	720
	-3.3 ft lb	*4,560	*4,560	*6,410	6,360	*6,320	3,270	*4,330	2,170	*3,000	1,610	*2,970	1,600
	-2.0 m kg	*3 400	*3 400	*3 700	2 970	*2 370	1 510	*1 590	1 000	-	-	*1 300	900
	-6.6 ft lb	*7,540	*7,540	*8,080	6,480	*5,170	3,310	*3,450	2,200	-	-	*2,860	2,000
	-3.0 m kg	-	-	*1 690	*1 690	*1 040	*1 040	-	-	-	-	*970	*970
	-9.9 ft lb	-	-	*3,610	*3,610	*2,160	*2,160	-	-	-	-	*2,110	*2,110
Boom : 3.0m / 9'10" Arm : 1.9m GP / 6'3" GP Shoe : 380mm / 15" Steel track CWT : 440 kg / 970lb Dozerblade: Up	5.0 m kg	-	-	-	-	-	-	-	-	-	-	*1 380	1 230
	16.5 ft lb	-	-	-	-	-	-	-	-	-	-	*3,060	2,760
	4.0 m kg	-	-	-	-	-	-	*1 280	1 110	-	-	*1 160	840
	13.2 ft lb	-	-	-	-	-	-	*2,830	2,430	-	-	*2,560	1,860
	3.0 m kg	-	-	-	-	-	-	*1 360	1 090	1 050	750	960	690
	9.9 ft lb	-	-	-	-	-	-	*3,000	2,380	2,290	1,640	2,140	1,520
	2.0 m kg	-	-	-	-	*2 070	1 610	1 450	1 040	1 030	730	870	620
	6.6 ft lb	-	-	-	-	*4,530	3,530	3,180	2,270	2,250	1,600	1,930	1,360
	1.0 m kg	-	-	-	-	2 140	1 470	1 390	980	1 000	700	840	590
	3.3 ft lb	-	-	-	-	4,690	3,230	3,050	2,140	2,190	1,540	1,870	1,310
	0.0 m kg	-	-	*1 510	*1 510	2 060	1 390	1 340	930	980	680	870	600
	0.0 ft lb	-	-	*3,370	*3,370	4,500	3,050	2,940	2,040	2,140	1,490	1,920	1,340
	-1.0 m kg	*2 060	*2 060	*2 880	2 640	2 040	1 370	1 320	910	970	680	960	670
	-3.3 ft lb	*4,560	*4,560	*6,410	5,760	4,450	3,010	2,900	2,000	2,130	1,490	2,120	1,480
	-2.0 m kg	*3 400	*3 400	*3 700	2 690	2 050	1 390	1 340	930	-	-	1 190	830
	-6.6 ft lb	*7,540	*7,540	*8,080	5,870	4,490	3,050	2,930	2,030	-	-	2,650	1,850
	-3.0 m kg	-	-	*1 690	*1 690	*1 040	*1 040	-	-	-	-	*970	*970
	-9.9 ft lb	-	-	*3,610	*3,610	*2,160	*2,160	-	-	-	-	*2,110	*2,110

Notes: 1. The above loads are in compliance with SAE J1097 and ISO 10567 Hydraulic Excavator Lifting Capacity Standards. 2. Rated loads do not exceed 87% of hydraulic lifting capacity or 75% of tipping load. 3. Rated loads marked with an asterisk (*) are limited by hydraulic capacity rather than tipping load.

Equipment

STANDARD EQUIPMENT
Engine
Low-emission Volvo T4f diesel engine
Standard cooling system
Two-stage air filter
Fuel filter and water separator
Alternator, 90 A
Electric / Electronic control system
Safe engine start function
Automatic idling system
Halogen working lights;
1ea on Cab front top LH / 1ea on the upper frame front bottom LH / 1ea boom LH
Battery, 12 V / 100 Ah
Start motor, 12 V / 2.5 kW
Monitor and keypad
Master electrical disconnect switch
Travel alarm
Electric pilot control change
Frame
Rearview mirror
440kg (970 lb) counterweight
Under cover
Dozer blade
Undercarriage
400mm (16") rubber track
Hydraulic system
Automatic two speed travel motors
Cylinder cushioning
Hydraulic fluid mineral 47
Cab and interior
Fabric operator seat with suspension
Seat belt, 2 inch retractable
Control joystick
Radio with MP3/AUX
Canopy
Master key
Hour meter (non analog)
Digging equipment
Boom: 3.0m (9'10"), Arm: 1.6m (5'3")
Linkage
Service
Tool kit-daily maintenance

OPTIONAL EQUIPMENT
Engine
Water separator (With heater)
Engine auto shut down
Electric / Electronic control system
Fuel filler pump: 35 l/min (9.3 gpm), with automatic shut-off
Halogen extra working lights;
Cab-mounted 1 (Rear)
Boom-mounted 1(RH)
Caretrack
Rotating warning beacon
Rearview Camera
Electric dozerblade switch on joystick
LED Light
Undercarriage / Superstructure
380mm (15"), 500mm (20") steel track
400mm (16") rubber pad
400mm (16") Add on rubber pad
Frame
Dozer blade with floating function
Angle dozer blade
Hydraulic system
Breaker & shear X1
- Max. flow: 60.5 l/min (15.9 gal/min)
- Pressure: 22.5 MPa (3,263 psi)
Slope & rotator X3
- Max. flow: 20.2 l/min (5.3 gal/min)
- Pressure: 14.7 Mpa (2,132 psi)
Grapple
Thumb (with three way valve)
Quick coupler
Hose rupture valve for boom, arm
Overload warning device
Hydraulic oil, ISO VG 32, 68
Hydraulic oil, biodegradable 46
Hydraulic oil, longlife oil 32, 46, 68
Cab and interior
Cab
Heater and air-conditioner
Fabric operator seat with suspension with heater
PVC operator seat with suspension
Control joystick, X3 proportional
Seat belt, 3 inch retractable
Radio with MP3/AUX/Bluetooth
Mechanical hour meter
Cab mounted FOG (Falling Object Guard)
FOPS (Falling Object Protection Structure)
Sun screen, front/roof
Safety net
Digging equipment
Arm: 1.9m (6'3")
Service
Tool kit, full scale
Spare parts

SELECTION OF VOLVO OPTIONAL EQUIPMENT

Electric dozer blade switch on joystick



Rear view camera



Angle dozer blade



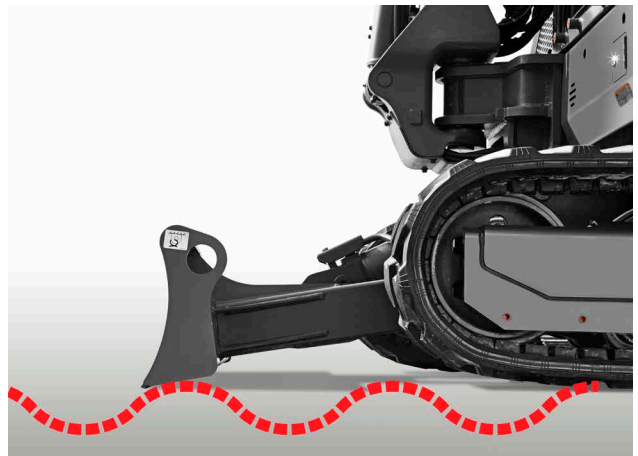
LED Light



Long arm



Floating dozer blade



Not all products are available in all markets. Under our policy of continuous improvement, we reserve the right to change specifications and design without prior notice. The illustrations do not necessarily show the standard version of the machine.



VOLVO

Volvo Construction Equipment
volvoce.com